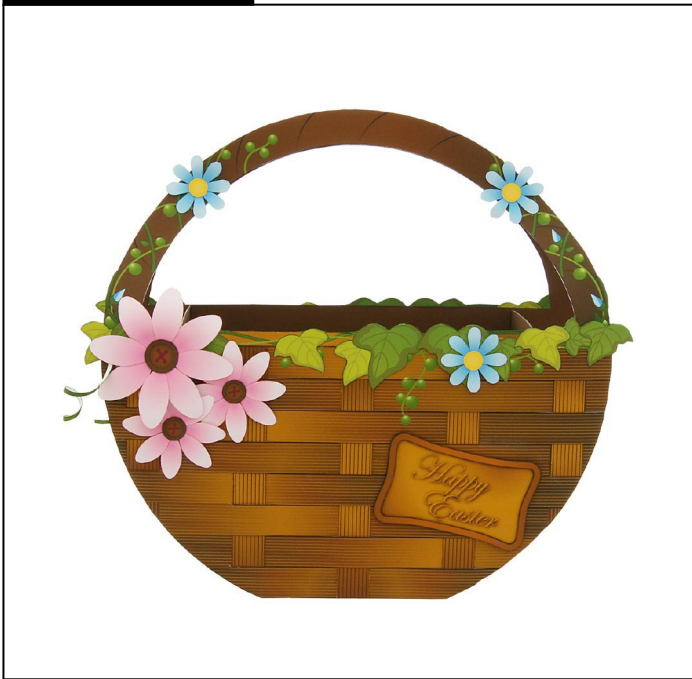


Completed Photo



Tools and Materials

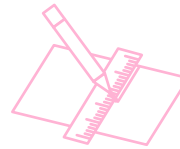
Scissors, glue (liquid glue, craft glue, etc), ruler, a used ball-point pen



How to make



Handy Hints



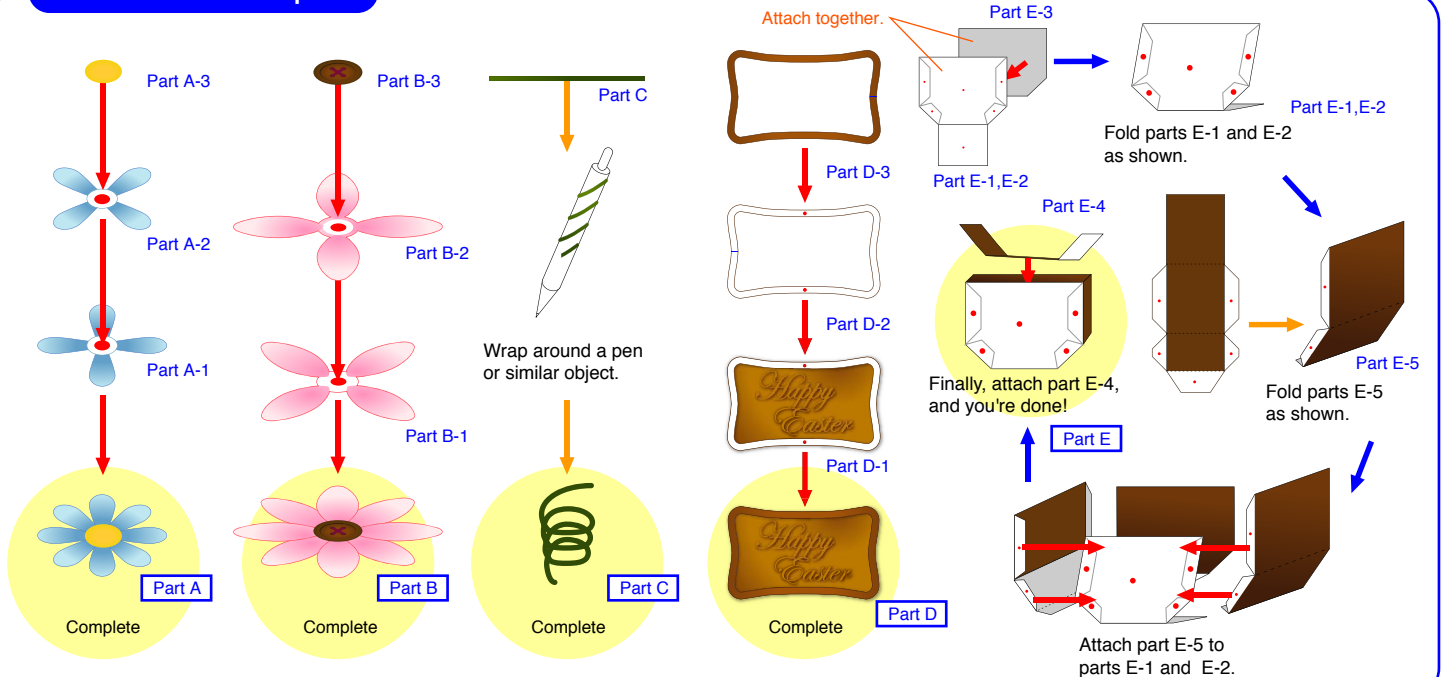
Hold a ruler up to the mountain and valley fold lines and use a dried-up pen to score along the lines. This will make for an easier, neater fold. (Be careful not to press too hard as this may scrape away the ink.)

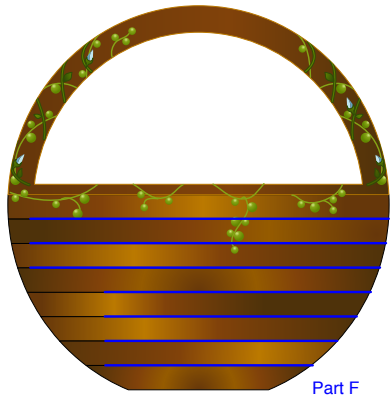
Caution



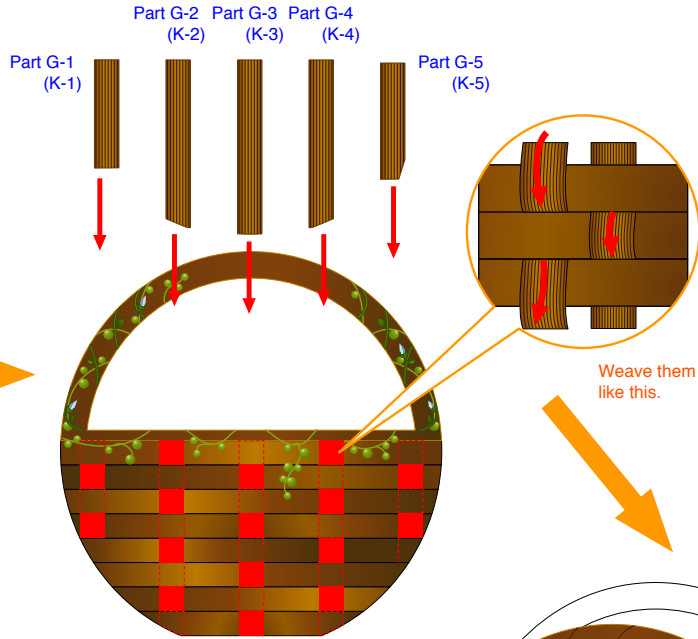
This paper craft involves using glue, scissors, and other utensils and materials (small parts, etc) that may be dangerous to young children. Please work somewhere out of reach of young children.

How to assemble the parts



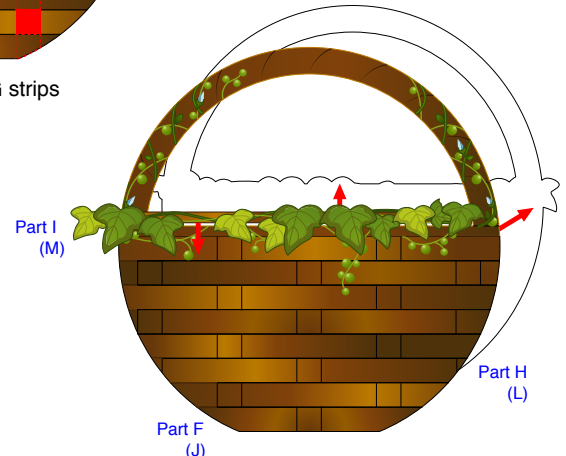


Part F
Cut slots along the lines.

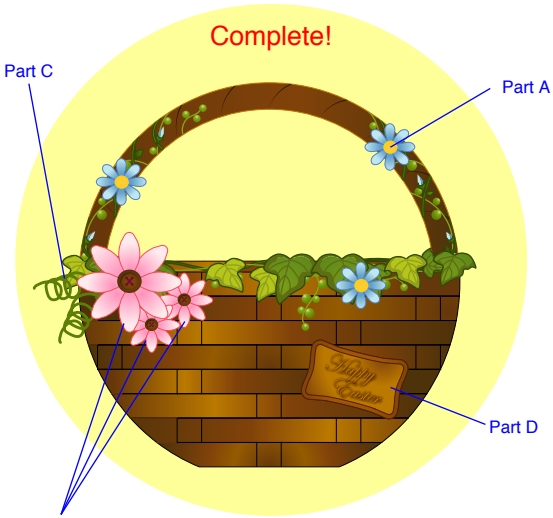


Weave the part G strips into part F.

Weave them together alternately like this.

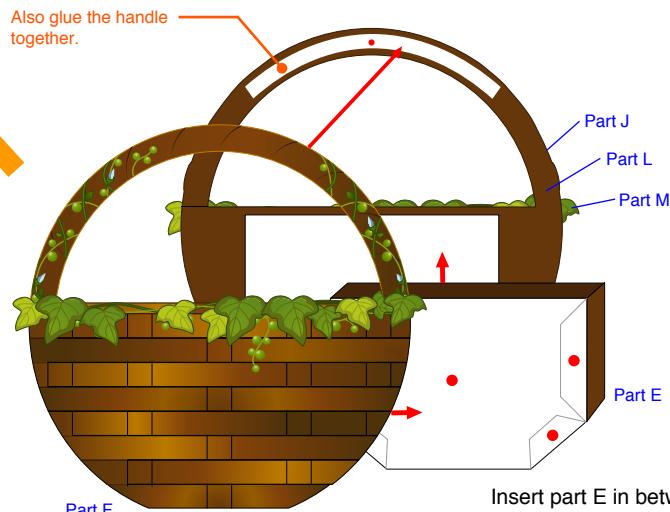


Part F (J)
Part H (L)
Part I (M)
After gluing part F and part H together at the reverse side, attach part I. Assemble parts J, L and M in the same way.



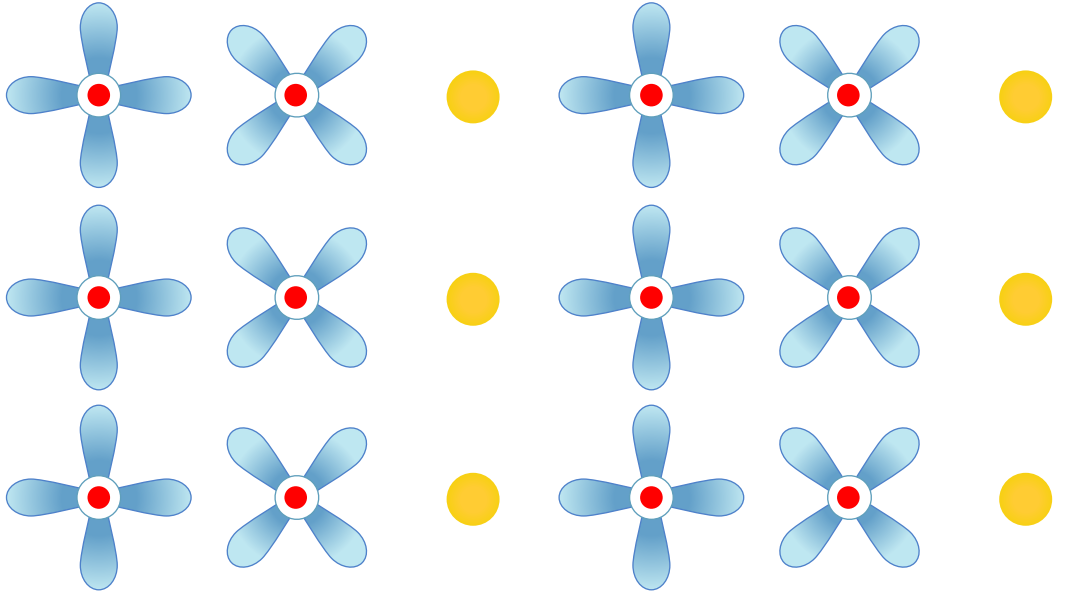
Complete!

Part C
Part A
Part B
Part D
Finally, attach the decoration parts, and you're done!



Part J
Part L
Part M
Part E
Insert part E in between part F and part J, and glue them together.

Part A



Part A-1

Part A-2

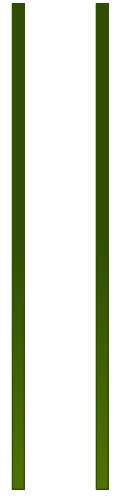
Part A-3

Part A-1

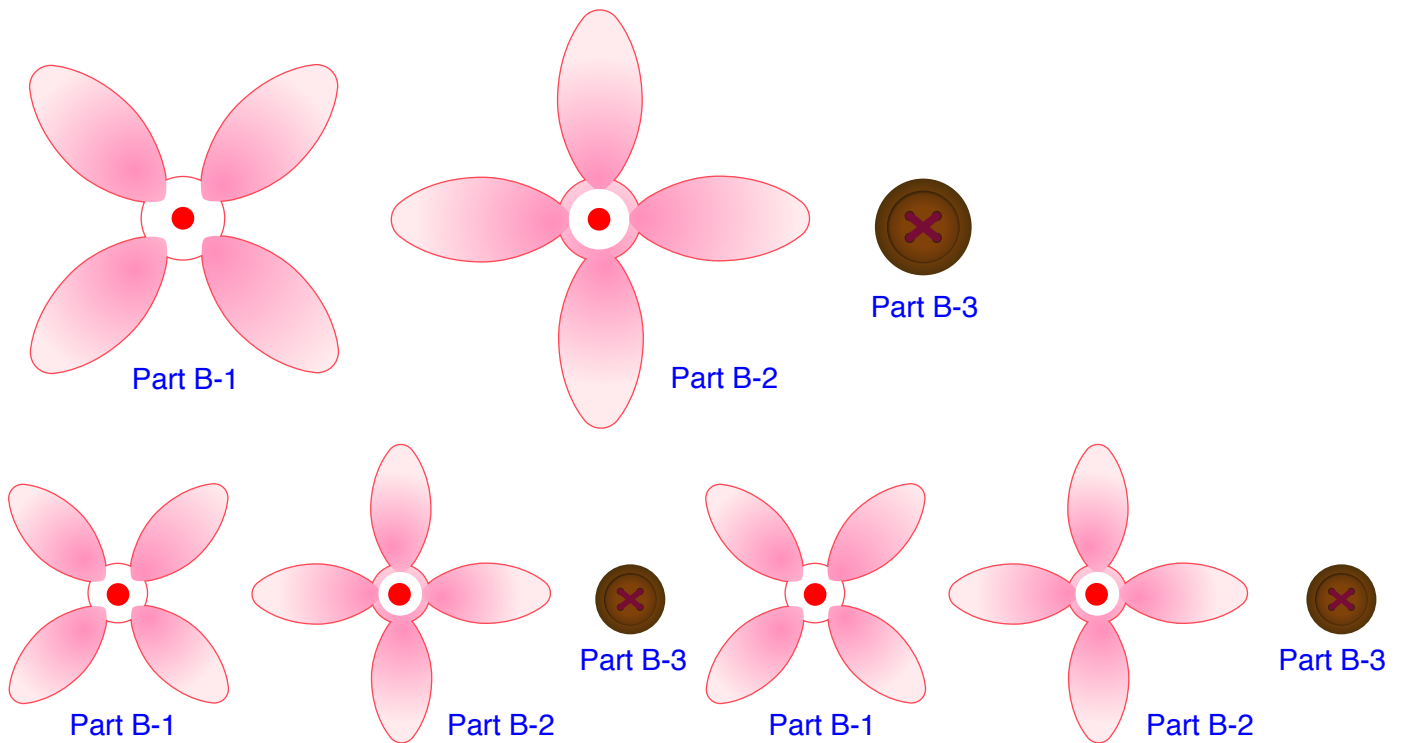
Part A-2

Part A-3

Part C



Part B



Part B-1

Part B-2

Part B-3

Part B-1

Part B-2

Part B-3

Part B-1

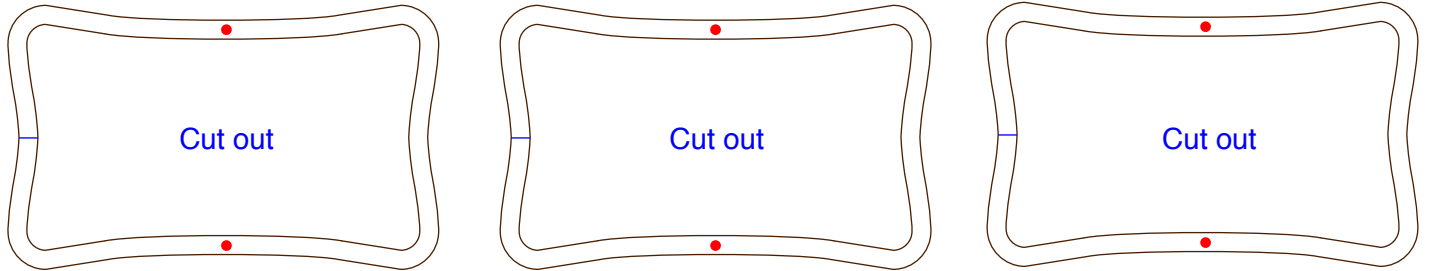
Part B-2

Part B-3

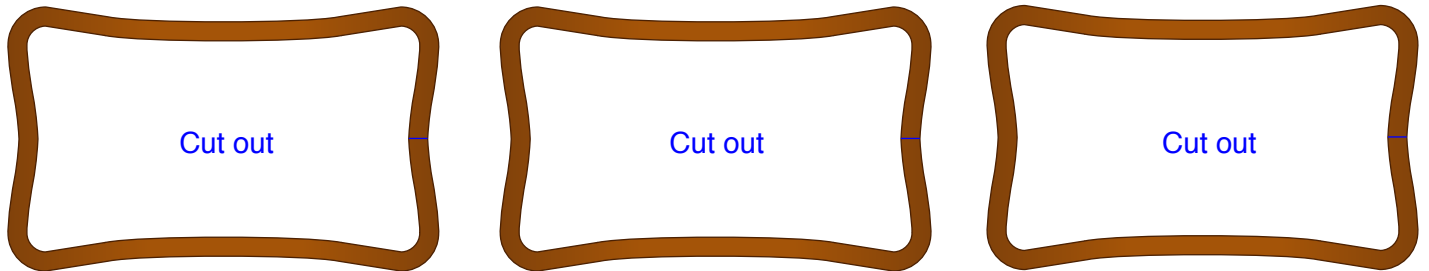
Part D-1



Part D-2

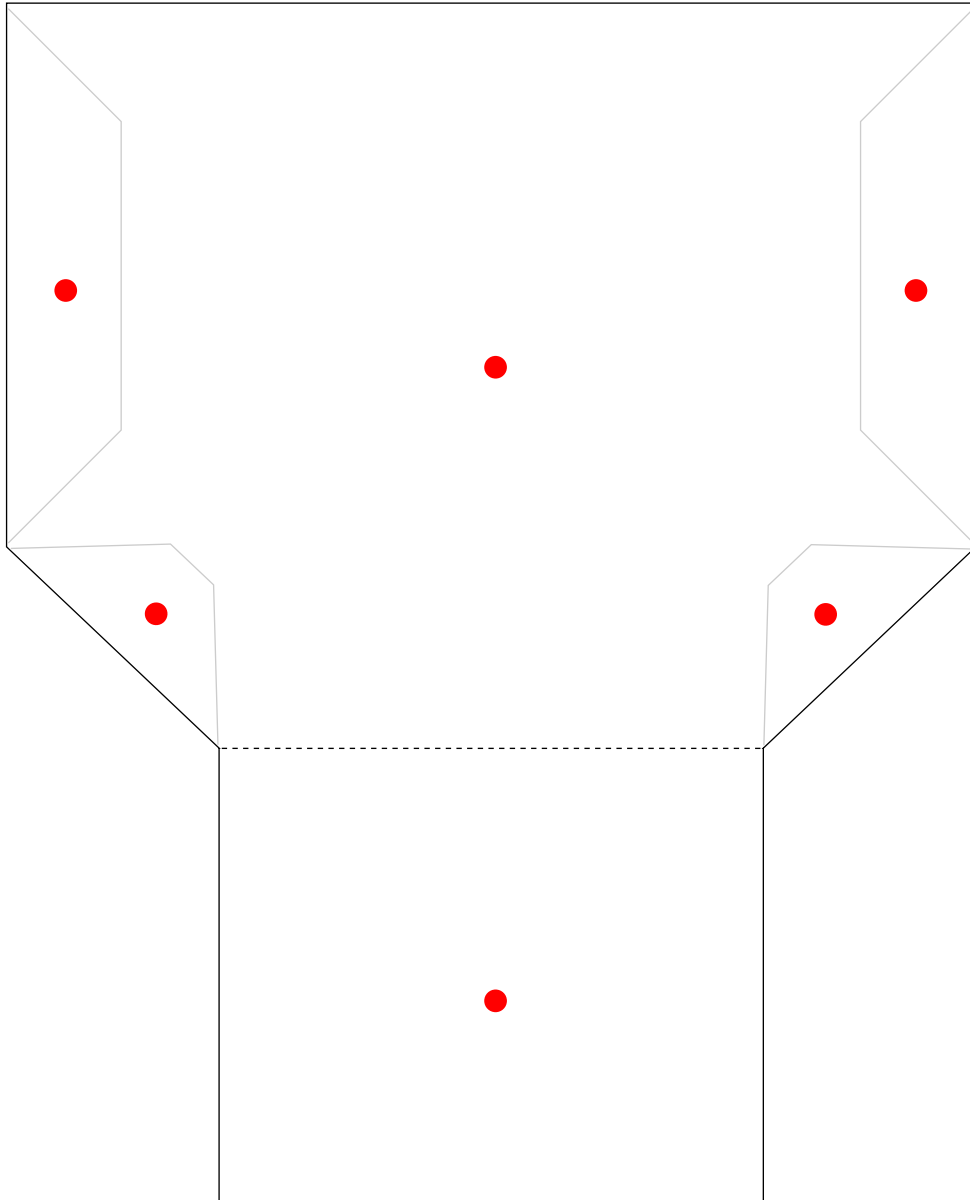


Part D-3





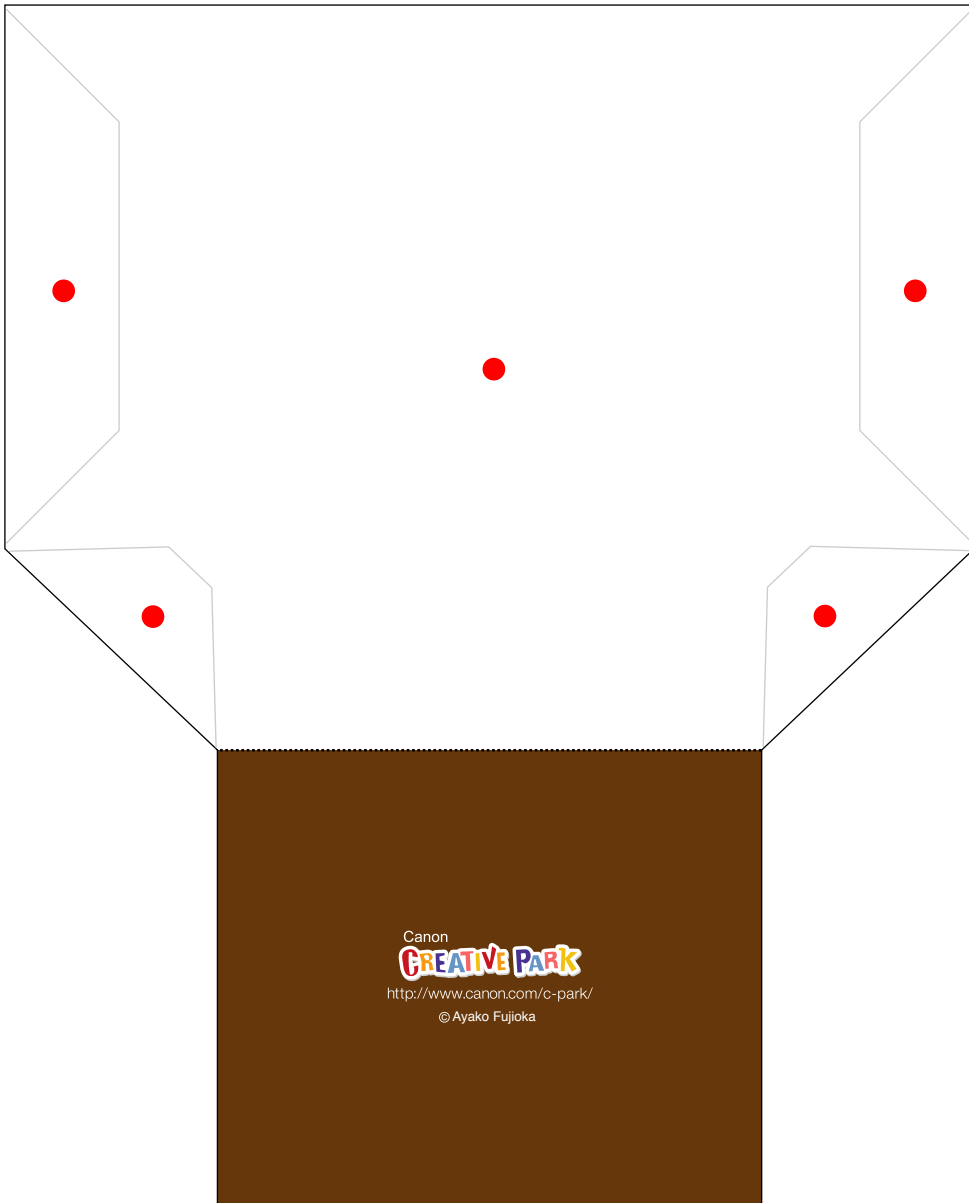
Part I



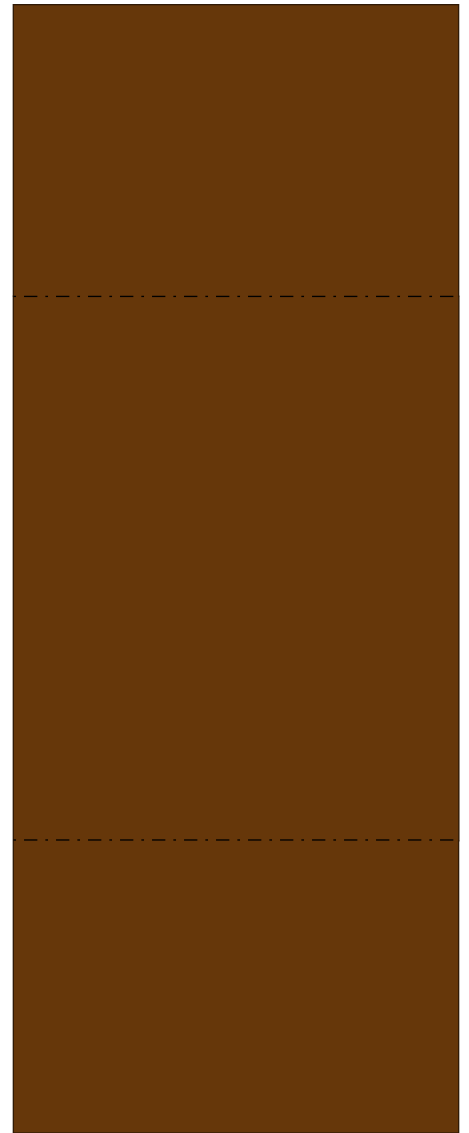
Part E-1



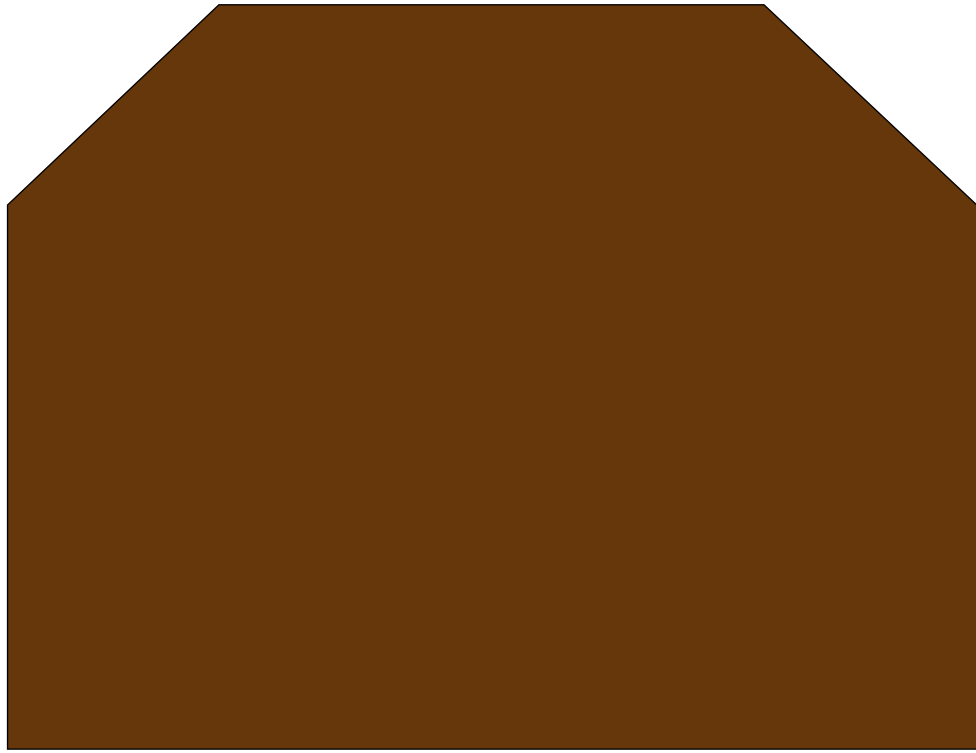
Part M



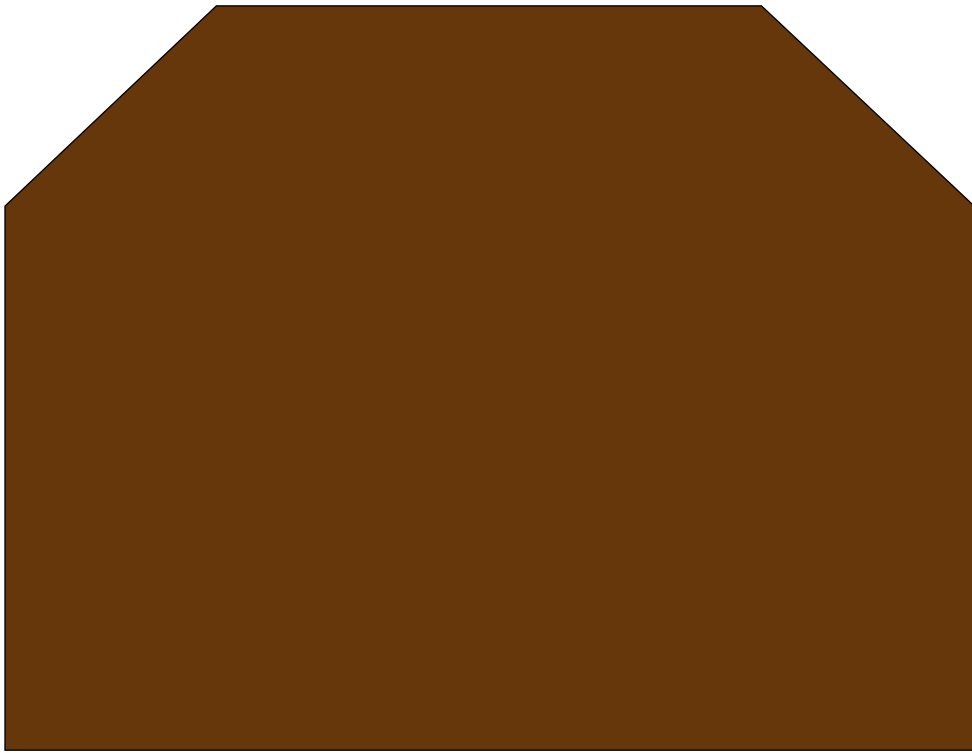
Part E-2



Part E-4



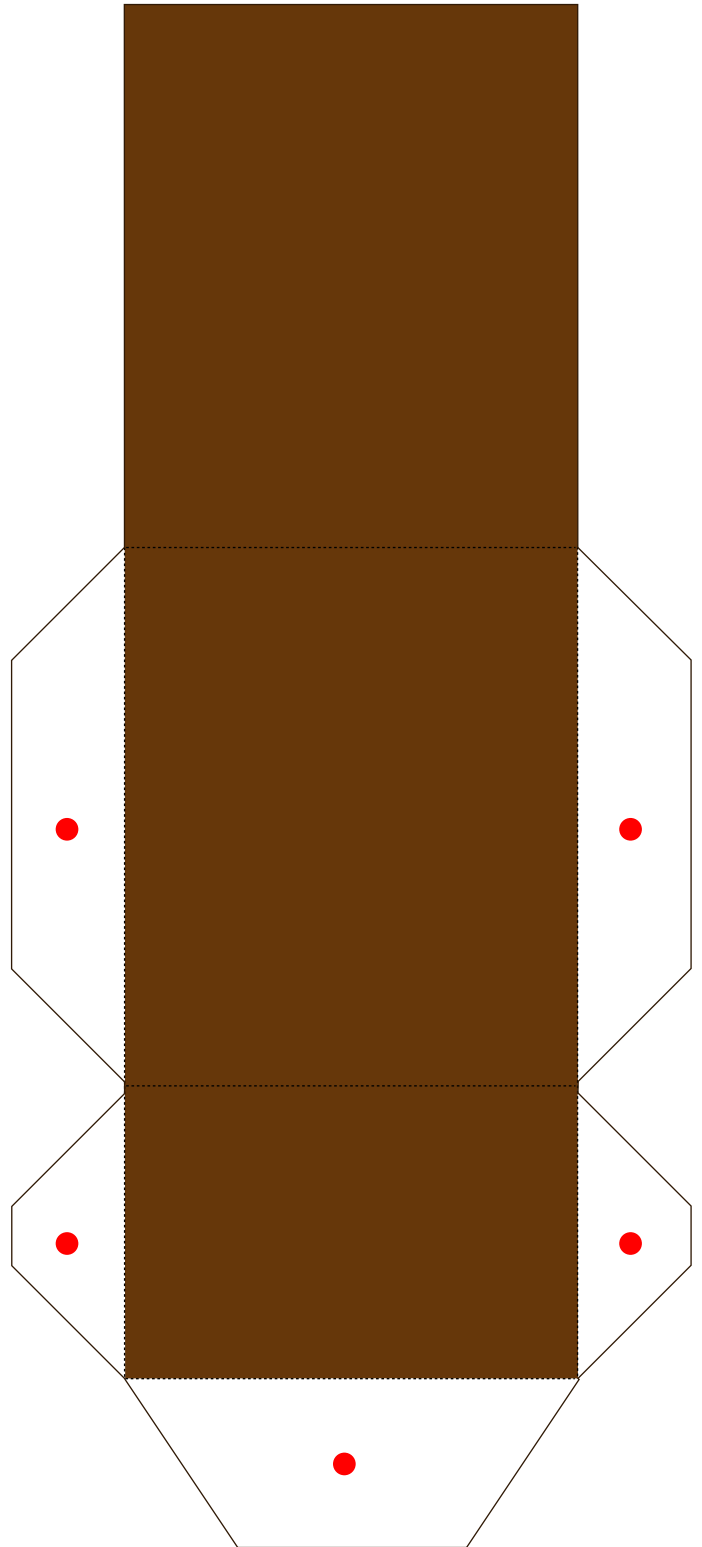
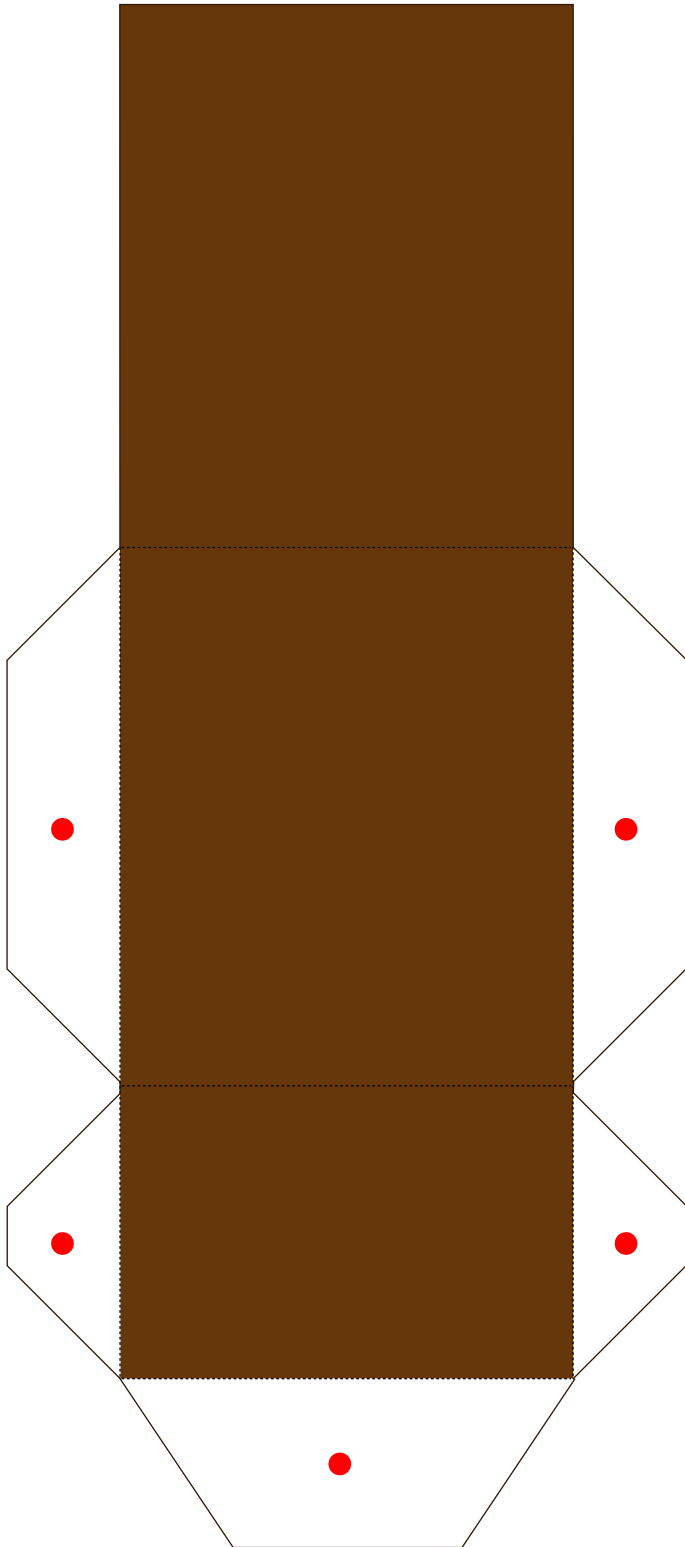
Part E-3

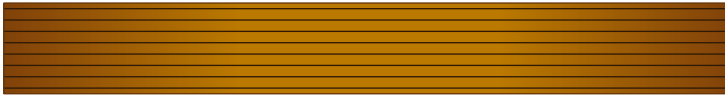


Part E-3

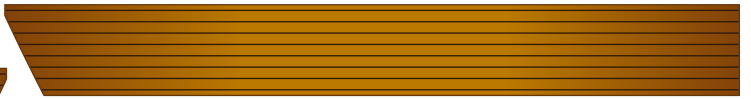
Part E-5

Part E-5

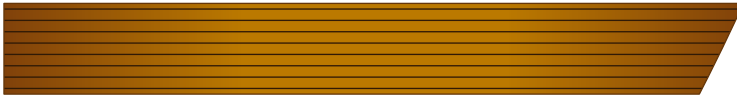




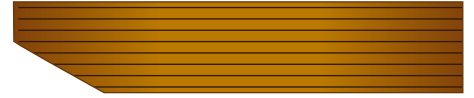
Part G-3



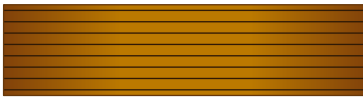
Part G-4



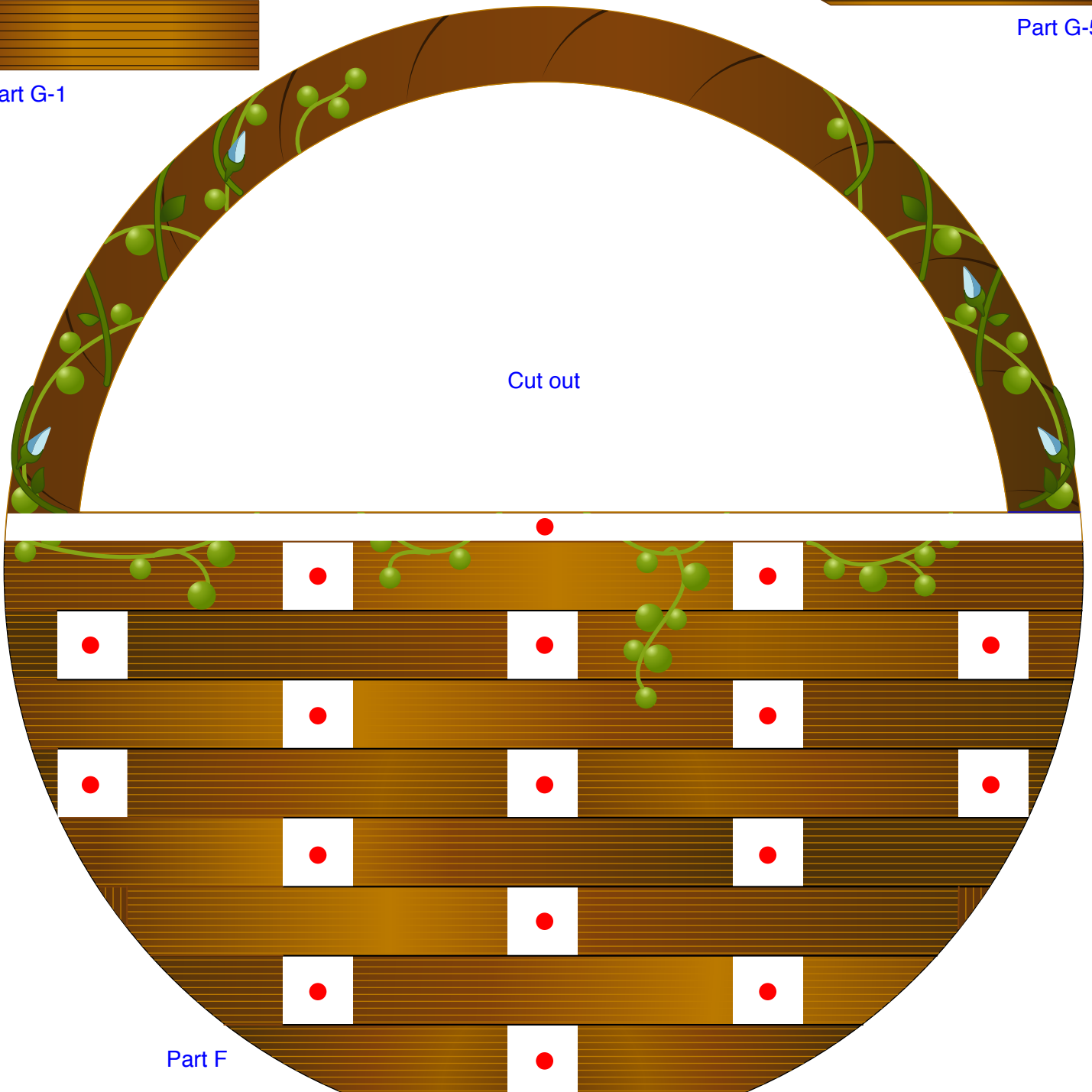
Part G-2



Part G-5

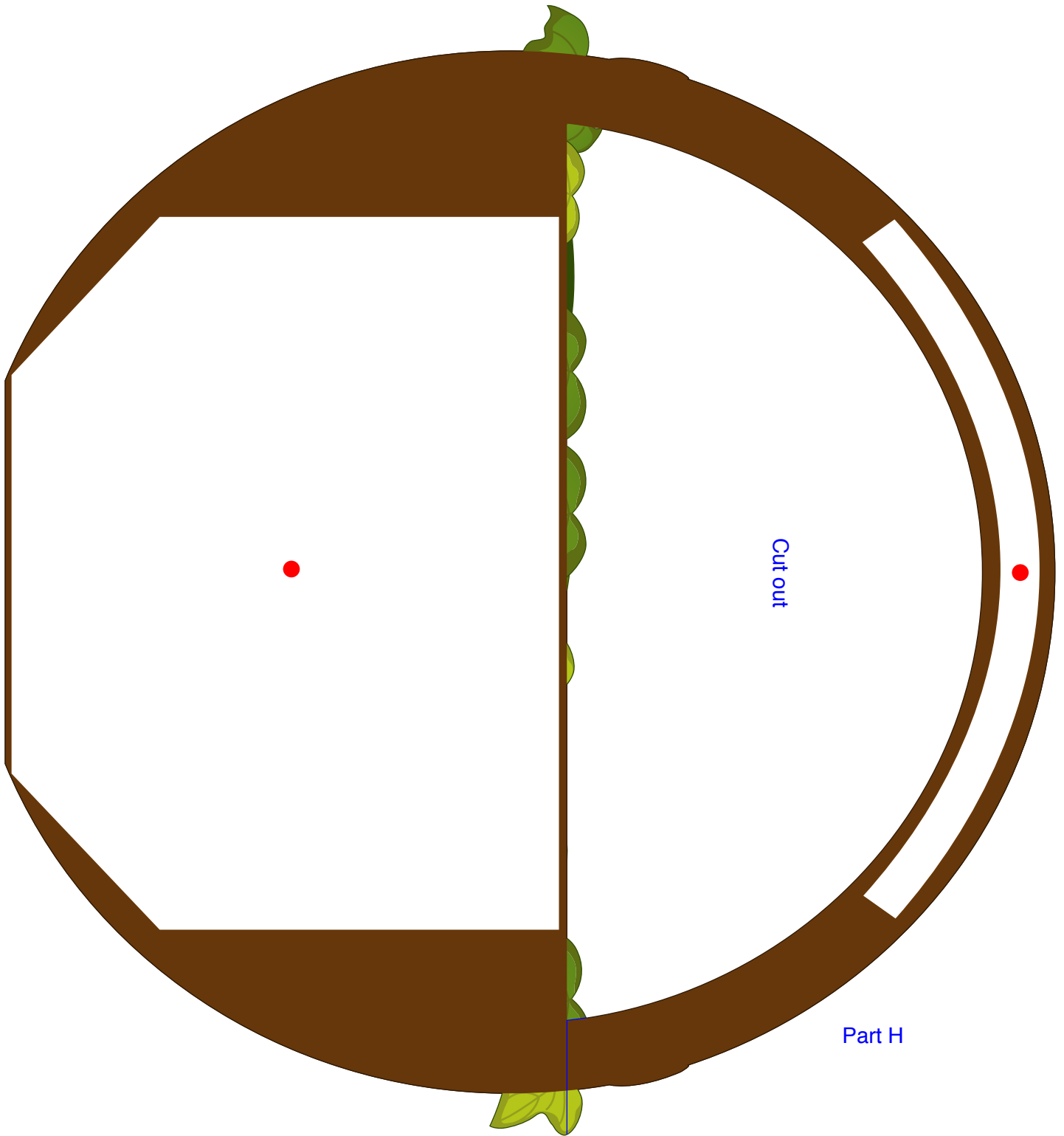


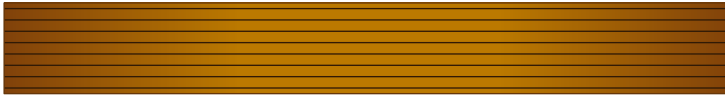
Part G-1



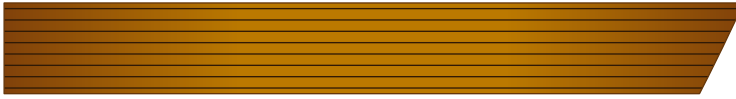
Cut out

Part F

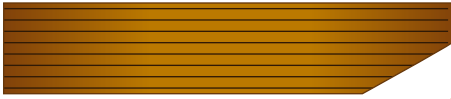




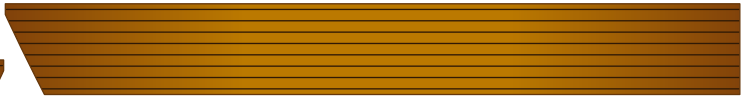
Part K-3



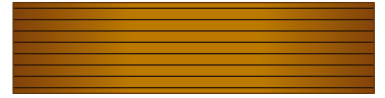
Part K-2



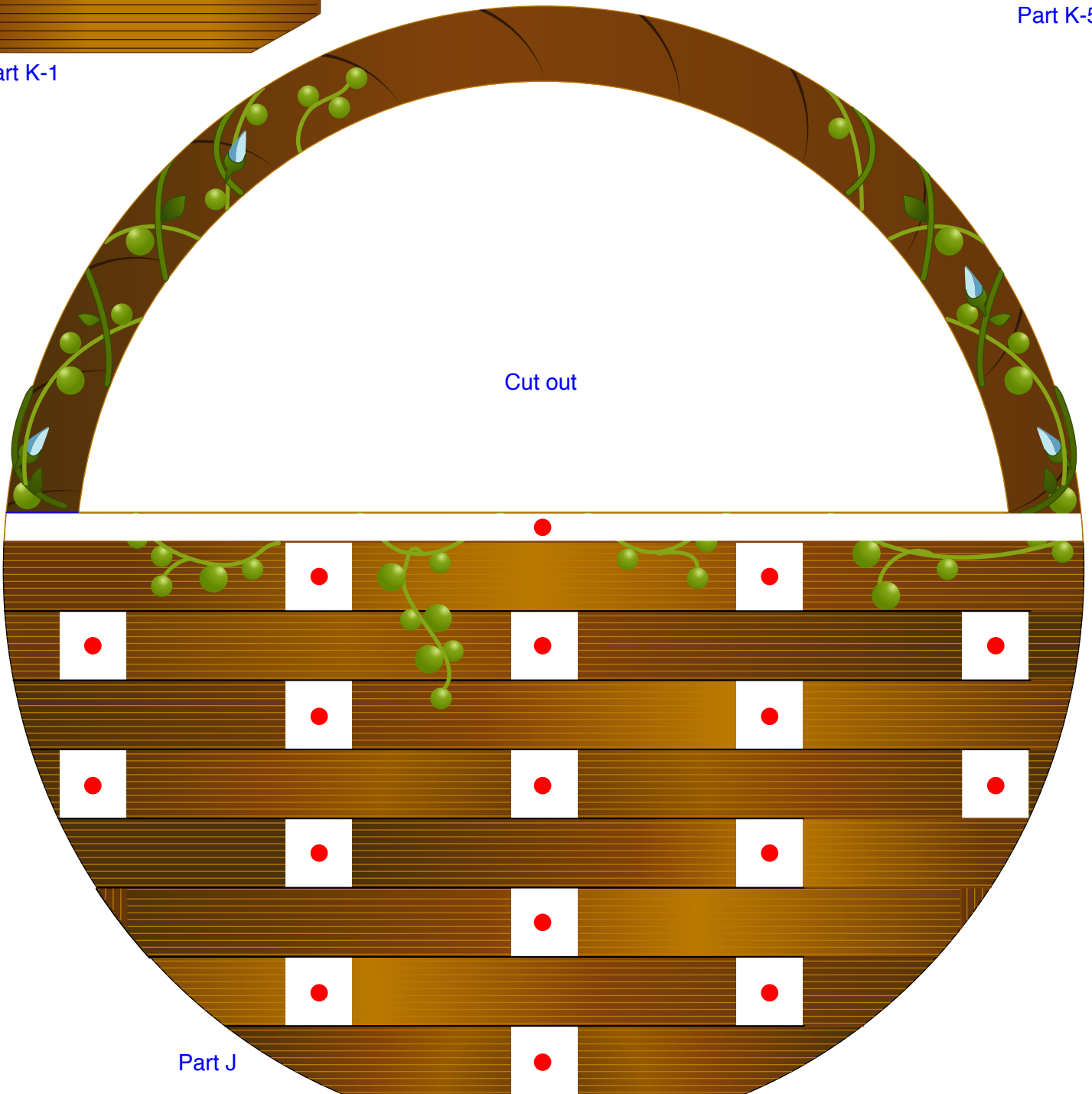
Part K-1



Part K-4



Part K-5



Cut out

Part J

